

DESIGNER:  
Diana Ovezza

ASSISTANCE:  
Rafał Buchner & Barbara Bigosińska

# Silverspoon

aaa

CONDENSED ROMANS

aaa

ROMANS

*aaa*

CONDENSED ITALICS

*aaa*

ITALICS

Silverspoon is a contemporary take on Copperplate Gothic. The original inspiration comes from the letters found on the Albert S. Samuels Clock on 856 Market Street, which Diana digitized in a speed-design session while visiting San Francisco in 2017.

Living in the world between sans and serif, Silverspoon's uses flaring on the vertical stems to offer stability. The slightly blocky letters offer good legibility despite their many details. They are great for setting movie titles, short paragraphs, or developing branding projects. The funky alternates can infuse a dose of uniqueness into any text set. In addition, Silverspoon comes with a dynamic italic weight, featuring curly details and high contrast connections.

Silverspoon Condensed is the space-saving version of its older cousin, which can be used for headlines and is especially attractive for setting large quotes and logos on packages.

---

GLYPH COUNT: 475

---

LANGUAGE SUPPORT:

Afrikaans	Italian	Polish
Albanian	Jola-Fonyi	Portuguese
Asu	Kabuverdianu	Romanian
Basque	Kalaallisut	Romansh
Bemba	Kalenjin	Rombo
Bena	Kamba	Rundi
Bosnian	Kikuyu	Rwa
Catalan	Kinyarwanda	Samburu
Chiga	Latvian	Sango
Colognian	Lithuanian	Sangu
Cornish	Low German	Scottish Gaelic
Croatian	Lower Sorbian	Sena
Czech	Luo	Serbian (Latin)
Danish	Luxembourgish	Shambala
Dutch	Luyia	Shona
Embu	Machame	Slovak
English	Makhuwa-Meetto	Slovenian
Esperanto	Makonde	Soga
Estonian	Malagasy	Somali
Faroese	Malay	Spanish
Filipino	Maltese	Swahili
Finnish	Manx	Swedish
French	Maori	Swiss German
Friulian	Meru	Taita
Galician	Morisyen	Teso
Ganda	North Ndebele	Turkish
German	Northern Sami	Upper Sorbian
Gusii	Norwegian	Vunjo
Hungarian	Bokmål	Walser
Icelandic	Norwegian	Welsh
Inari Sami	Nynorsk	Western Frisian
Indonesian	Nyankole	Wolof
Irish	Oromo	Zulu

DO YOU TRUST YOUR CURRENT SUPPLEMENT BRAND? LOOKING FOR AN HONEST AND RELIABLE COMPANY?

# Supplements

Ontdek de krachtige gezondheidsvoordelen van paddestoelen met de KIKI Health Organic *Lion's Mane Extract Mushroom Vegicaps*; een flesje met 60 hypromellosecapsules met extracten van de Lion's

**GREEN TEA:**  
*200 mg of  
L-theanine/cup*

#### SUMMARY

L-theanine is an amino acid found in tea that can increase feelings of calmness and may be linked to increased creativity. Its effectiveness is even greater when combined with caffeine.

## *Vitamin B2 & B6*

**The History of Nootropics in a Nutshell**

1 In a restaurant

2 At a private dinner party

3 At a work event

4 At a formal gala

DE-101  
RESTAURANT

# *Dining Etiquette*

An excerpt from 1860's "The Gentleman's Book of Etiquette, and Manual of Politeness" indicates: *at the table wait until she is seated, indeed wait until every lady is seated, before taking your own place.*

## Tablescape Competition

CONTACT US TODAY AT 800-545-7511 TO LEARN HOW WE CAN RAISE THE BAR FOR YOU

*Silver Baskets & Mirrored Trays*

### **FINE CHINA:**

Fine china and dinnerware are two different types of accoutrements individuals can use when setting a table. It is typically used for special occasions. That's because fine china is rare and the cost to replace items if they are broken is considerable. Through the years, many Europeans followed suit and created their own

CONDENSED

300 Light  
400 Regular  
700 Bold

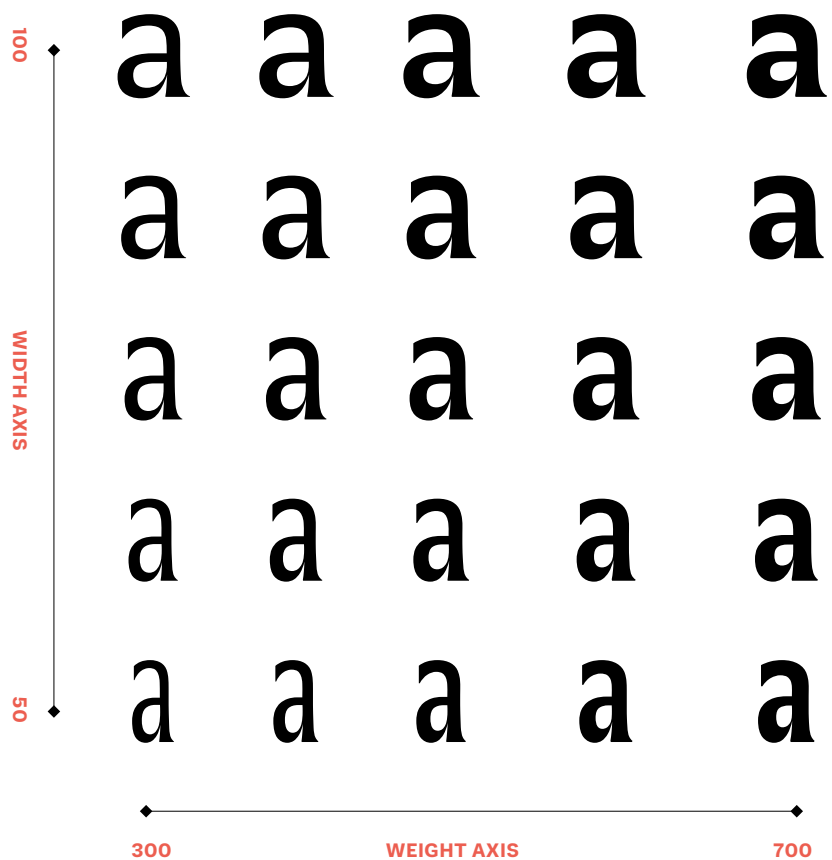
300 *Light Italic*  
400 *Italic*  
700 *Bold Italic*

STANDARD

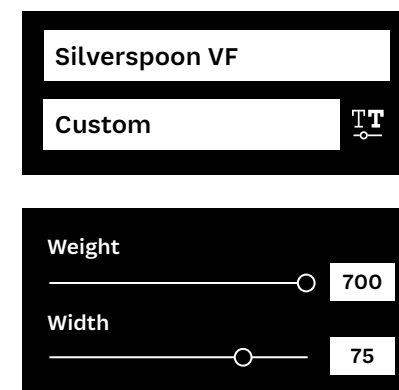
300 Light  
400 Regular  
700 Bold

300 *Light Italic*  
400 *Italic*  
700 *Bold Italic*

This font uses variable font technology. In supported apps and browsers, you can make use of sliders or custom values to access variations of the fonts. Explore freely between the weight and width axes, which means that you can decide for any custom weight between Light and Bold [400–700], and any width between Condensed and Standard [75–100].



Thanks to variable font technology you can choose any custom weight value between 100 and 700 and width value between 50 and 100.



# *Details*

Ascenders are the same height as caps

Very thin connections

Small diacritics

Square dots

Extra spurs on some characters

Hypnótoids

Very large x-height

Flared serifs

Short descenders

Tight spacing

Low contrast

Serifs rest on baseline



Hypnótooids

Slight curvature on many stems

Unusual details

Sharp, yet slightly blunted endings

Curly alternates

Very large x-height

Flared bracketed serifs

Very narrow letter forms

Terminals at straight angles

Slight curvature  
on many stems

Some characters  
in italic are very  
flamboyant

Unusual  
details

Top serifs are  
perfectly straight

*Expěctedly2*

Very large  
x-height

Serifless  
descenders

Curled terminals in  
some letters

Calligraphic  
out-strokes

Italics feature more unusual details than romans

Very thin and deep connections

Regular rhythm

Curled terminals instead of spurred serifs

Expēctedly2

Very large x-height

Curled connected strokes instead of serifs

Flared terminals are sharp and elongated

# *Character Set*

ABCDEFGHIJKLMNO  
PQRSTUVWXYZ

a**a**bcdefghijklmno  
pqr**r**s**s**tuv**v**w**w**xy**y**z

0123456789 &**&**

ABCDEFGHIJKLMNOPQRSTUVWXYZ  
PQRSTUVWXYZ

abcdefghijklmnopno  
pqrstu vwxyz

0123456789 & &



## NUMERATORS

H1234567890

## DENOMINATORS

H1234567890

## FRACTIONS

1/2 1/4 3/4 1/8 3/8 5/8 7/8

## PUNCTUATION &amp; OTHER SYMBOLS

.,:;!¡?¿' " \* « » ‹ › ‘ ’ , „ “ ” # % ‰ ( ) [ ] { } / \ &amp; &amp; ¶ † ‡ • † … — — — — \_ @ § | ¡ © ° ® ™

## CASE ALTERNATES

i ¿ ( ) { } [ ] - - — « » ‹ ›

## MATH SYMBOLS

- + &lt; = &gt; ~ ¬ ± × ÷ ≈ ≠ ≤ ≥ μ ∂ Ω Δ Π Σ √ ∫ ∞

## CURRENCY SYMBOLS

\$ £ ¥ € ¢ ₣



*A B C D E F G H I J K L M N O*  
*P Q R S T U V W X Y Z*

*a a b c d e f g h i j k l m n o*  
*p q r r s t u v w x y z*

*0 1 2 3 4 5 6 7 8 9 &*

*ABCDEFGHIJKLMNO  
PQRSTUVWXYZ*

*a**a**bcdefghijklmno  
pqr**r**stuvwxyz*

*0123456789 &*



## NUMERATORS

*H*1234567890

## DENOMINATORS

*H*1234567890

## FRACTIONS

*1/2 1/4 3/4 1/8 3/8 5/8 7/8*

## PUNCTUATION &amp; OTHER SYMBOLS

*. , : ; ! ; ' " \* « » ‹ › ‘ ’ , „ “ ” # % ‰ ( ) [ ] { } / \ & ■ † ‡ • † … - - — \_ @ § | | © ° ® ™*

## CASE SENSITIVE FORMS

*i ç ( ) { } [ ] - - — « » ‹ ›*

## MATH SYMBOLS

*- + < = > ~ ¬ ± × ÷ ≈ ≠ ≤ ≥ π ∂ Ω Δ Π Σ √ ∫ ∞*

## CURRENCY SYMBOLS

*\$ £ ¥ € ¢ ₣*

# *OpenType* *Features*

---

STYLISTIC SET 1: alternate curly a

artistic → artistic

---

STYLISTIC SET 2: alternate curly g

vitrage → vitrage

---

STYLISTIC SET 3: alternate curly r

grazing → grazing

---

---

STYLISTIC SET 4: alternate curly a

pastel → pastel

---

STYLISTIC SET 5: alternate curly v, w

viewers → viewers

---

STYLISTIC SET 6: alternate curly y

strictly → strictly

---

## STYLISTIC SET 6: alternate curly ampersand

Rob & Co → Rob & Co

## [ITALICS ONLY] STYLISTIC SET 1: alternate curly a

*artistic* → *artistic*

## [ITALICS ONLY] STYLISTIC SET 2: alternate curly r

*grazing* → *grazing*



ORDINALS (SPANISH)



3a 3A 2o 2O



3<sub>a</sub> 3<sub>A</sub> 2<sub>o</sub> 2<sub>O</sub>

SUPERIOR NUMERALS



H123456789

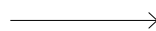


H<sup>123456789</sup>

INFERIOR NUMERALS



H123456789



H<sub>123456789</sub>

NUMERATORS (FRACTIONS)



H123456789

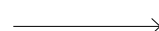


H123456789

DENOMINATORS (FRACTIONS)



H123456789



H123456789

FRACTIONS



2/57 100/399



2/57 100/399

CASE SENSITIVE FORMS (FOR ALL-CAPS SETTING)



(0-6) SUB-PAR



(0-6) SUB-PAR

¿Por qué? ¡¡¡No lo creo!!! «Romeo & Juliet»

¿POR QUÉ? ¡¡¡NO LO CREO!!! «ROMEO & JULIET»

# *Text Samples*

36/38 PT

The expression silver spoon is synonymous with (inherited) wealth. As an adjective, “silver spoon” describes someone who has a prosperous background or is of a well-to-do family environment. The phrase “born with a silver spoon in his mouth” appeared in print in English as early as 1719, in Peter Anthony Motteux’s translation of the famous novel *Don Quixote*: “*Mum, Teresa, quoth Sancho, ’tis not all Gold that glisters [sic], and every Man was not born with a Silver Spoon in his Mouth.*”

36/38 PT

The expression silver spoon is synonymous with (inherited) wealth. As an adjective, “silver spoon” describes someone who has a prosperous background or is of a well-to-do family environment. The phrase “born with a silver spoon in his mouth” appeared in print in English as early as 1719, in Peter Anthony Motteux’s translation of the novel *Don Quixote*: “*Mum, Teresa, quoth Sancho, ‘tis not all Gold that glisters [sic], and every Man was not born with a Silver Spoon in his Mouth.*”

36/38 PT

**The expression silver spoon is synonymous with (inherited) wealth. As an adjective, “silver spoon” describes someone who has a prosperous background or is of a well-to-do family environment. The phrase “born with a silver spoon in his mouth” appeared in print in English as early as 1719, in Peter Anthony Motteux’s translation of the novel Don Quixote: “Mum, Teresa, quoth Sancho, ’tis not all Gold that glisters [sic], and every Man was not born with a Silver Spoon in his**

---

24/26 PT

Before the place setting became popular around the 18th century, people brought their own spoons to the table, carrying them in the same way that people today carry wallet and keys. In pre-modern times, ownership of a silver spoon was an indication of social class, denoting membership in the land-owning classes. There are similar expressions in other languages. For example, in Portuguese and Spanish, an expression translated as “*born in a gold cradle*” is equivalent to the English, “*born with a silver spoon*”. The term “*gold spoon*” is much less commonly used, but finds occasional use, such as the 1840 American Gold Spoon Oration criticizing then-president Martin

---

20/24 PT

There are similar expressions in other languages. For example, in Portuguese and Spanish, an expression translated as “*born in a gold cradle*” is equivalent to the English, “*born with a silver spoon*”. The term “*gold spoon*” is much less commonly used, but finds occasional use, such as the 1840 American Gold Spoon Oration criticizing then-president Martin Van Buren for his supposedly luxurious lifestyle. In some languages,



---

24/26 PT

Before the place setting became popular around the 18th century, people brought their own spoons to the table, carrying them in the same way that people today carry wallet and keys. In pre-modern times, ownership of a silver spoon was an indication of social class, denoting membership in the land-owning classes. There are similar expressions in other languages. For example, in Portuguese and Spanish, an expression translated as “born in a gold cradle” is equivalent to the English, “born with a silver spoon”. The term “gold spoon” is much less commonly used, but finds occasional use, such as the 1840 American Gold Spoon Oration criticizing then-president Martin

---

20/24 PT

There are similar expressions in other languages. For example, in Portuguese and Spanish, an expression translated as “*born in a gold cradle*” is equivalent to the English, “*born with a silver spoon*”. The term “*gold spoon*” is much less commonly used, but finds occasional use, such as the 1840 American Gold Spoon Oration criticizing then-president Martin Van Buren for his supposedly luxurious lifestyle.

---

24/26 PT

**Before the place setting became popular around the 18th century, people brought their own spoons to the table, carrying them in the same way that people today carry wallet and keys. In pre-modern times, ownership of a silver spoon was an indication of social class, denoting membership in the land-owning classes. There are similar expressions in other languages. For example, in Portuguese and Spanish, an expression translated as “*born in a gold cradle*” is equivalent to the English, “*born with a silver spoon*”. The term “*gold spoon*” is much less commonly used, but finds occasional use, such as the 1840 American Gold Spoon Oration criticizing then-president**

---

20/24 PT

**There are similar expressions in other languages. For example, in Portuguese and Spanish, an expression translated as “*born in a gold cradle*” is equivalent to the English, “*born with a silver spoon*”. The term “*gold spoon*” is much less commonly used, but finds occasional use, such as the 1840 American Gold Spoon Oration criticizing then-president Martin Van Buren for his supposedly luxurious**

38/38 PT

The phrase “*born with a silver spoon in his mouth*” appeared in print in English as early as 1719, in Peter Anthony Motteux’s translation of the novel *Don Quixote*: “*Mum, Teresa, quoth Sancho, ’tis not all Gold that glisters [sic], and every Man was not born with a Silver Spoon in his Mouth.*” Because the phrase is used as a translation of a Spanish proverb with a different literal meaning.

30/32 PT

The phrase “*born with a silver spoon in his mouth*” appeared in print in English as early as 1719, in Peter Anthony Motteux’s translation of the novel *Don Quixote*: “*Mum, Teresa, quoth Sancho, ’tis not all Gold that glisters [sic], and every Man was not born with a Silver Spoon in his Mouth.*” Because the phrase is used as a translation of a Spanish proverb with a different literal meaning (“*muchas veces donde hay estacas no hay tocinos,*” literally: “*often where there are hooks [for hanging hams] there are no hams*”), it seems that the phrase was already

38/38 PT

The phrase “*born with a silver spoon in his mouth*” appeared in print in English as early as 1719, in Peter A. Motteux’s translation of the novel *Don Quixote*: “*Mum, Teresa, quoth Sancho, ’tis not all Gold that glisters [sic], and every Man was not born with a Silver Spoon in his Mouth.*” Because the phrase is used as a translation of a Spanish proverb with a diff-

30/32 PT

The phrase “*born with a silver spoon in his mouth*” appeared in print in English as early as 1719, in Peter Anthony Motteux’s translation of the novel *Don Quixote*: “*Mum, Teresa, quoth Sancho, ’tis not all Gold that glisters [sic], and every Man was not born with a Silver Spoon in his Mouth.*” Because the phrase is used as a translation of a Spanish proverb with a different literal meaning (“*muchas veces donde hay estacas no hay tocinos,*” literally: “often where

38/38 PT

The common phrase “*born with a silver spoon in his mouth*” appeared in print in English as early as 1719, in Peter Anthony Motteux’s translation of the novel Don Quixote: “*Mum, Teresa, quoth Sancho, ’tis not all Gold that glisters [sic], and every Man was not born with a Silver Spoon in his Mouth.*”

30/32 PT

The known phrase “*born with a silver spoon in his mouth*” appeared in print in English as early as 1719, in Peter Anthony Motteux’s translation of the novel Don Quixote: “*Mum, Teresa, quoth Sancho, ’tis not all Gold that glisters [sic], and every Man was not born with a Silver Spoon in his Mouth.*” Because the phrase is used as a translation of a Spanish proverb with a different literal meaning (“*muchas veces donde*

# *Samples in Selected Languages*

## 12/16 PT GERMAN

Das Silber stammte meistens aus den Minen in Laurion, die etwa 50 Kilometer südlich von Athen lagen. Bei den alten Ägyptern war Silber als Mondmetall bekannt. Auch in der Alchemie steht der Mond (lateinisch Luna) für Silber. Spätmittelalterliche und frühneuzeitliche Autoren, insbesondere auf dem Gebiet der Alchemie, nahmen eine Entstehung des Silbers durch Vermischung von Schwefel und Quecksilber (lateinisch Argentum vivum) an. In

## 12/16 PT FRENCH

Le deuxième domaine avec environ 7 700 tonnes au début des années 1990 est la bijouterie et l'orfèvrerie. L'argent est utilisé pour fabriquer des objets et des bijoux (pendentifs, bracelets, colliers...) tout ceci est possible car l'argent possède une propriété qui permet de concevoir ces œuvres : sa bonne malléabilité. L'argent est souvent allié à de faibles quantités de cuivre pour renforcer ses caractéristiques mécaniques. L'argent le plus courant en bijouterie

## 12/16 PT TURKISH

Gümüş' ün kullanıldığı alanları sıralayacak olursak; fotoğraf sanayii, elektronik, para imali, süs eşyası ve takı yapımı ,alaşım lar, dişçilik 'tir. Ayrıca, yapay yağmur yağdırmakta, ayna sırlarının yapımında, bilgisayar röle kontaklarında, pil yapımında da kullanılmaktadır. Gümüş elektriği çok iyi geçirdiğinden ve kolayca tel haline geldiğinden, elektrik teli olarak kullanılmaktaydı. Fakat nadir bulunması ve kıymeti dolayısıyla, artık bu amaçla

## 12/16 PT SPANISH

En joyería y platería para fabricar gran variedad de artículos ornamentales y de uso doméstico cotidiano, y con menor grado de pureza, en artículos de bisutería. Para identificar la auténtica Plata de Ley o plata esterlina la que se usa para la fabricación de joyas, un sello con la inscripción "925" y algún otro símbolo que identifica al joyero viene haciéndose desde la Edad Media y todavía hoy en día se usa este método para identificarla. Las joyas y la platería de

## 12/16 PT CZECH

Stříbro a mince z něj ražené byly po tisíciletí rozšířeným platidlem. Pro měkkost stříbra se z něj velice dobře razily stříbrné peníze. Nejznámější a nejrozšířenější stříbrnou mincí byl tolar. Stříbrný tolar ražený byl tak rozšířeným a oblíbeným a stálým platidlem, až se stal i základem pro dnešní dolar. Tolar byl platidlem několik set let nejen v Evropě ale i na dalších kontinentech. Podobnost slov tolar a dolar je patrná. Další stříbrnou mincí byl groš. V našich

## 12/16 PT POLISH

W 2010 roku Meksyk z produkcją 128,6 mln uncji jest największym producentem srebra na świecie (15% światowej rocznej produkcji). Kolejne miejsca zajmują Peru i Chiny. Największym producentem srebra w Europie jest Polska. Dzięki dolnośląskim złożom miedzi i srebra eksploatowanym przez KGHM Polska Miedź wytwarzane jest rocznie ok. 1300 ton srebra rafinowanego. W 2010 KGHM Polska Miedź był trzecim producentem srebra na świecie, po australijskiej

## 12/16 PT GERMAN

Das Silber stammte meistens aus den Minen in Laurion, die etwa 50 Kilometer südlich von Athen lagen. Bei den alten Ägyptern war Silber als Mondmetall bekannt. Auch in der Alchemie steht der Mond (lateinisch Luna) für Silber. Spätmittelalterliche und frühneuzeitliche Autoren, insbesondere auf dem Gebiet der Alchemie, nahmen eine Entstehung des Silbers durch Vermischung von Schwefel und Quecksilber (lateinisch Argentum vivum) an. In

## 12/16 PT FRENCH

Le deuxième domaine avec environ 7 700 tonnes au début des années 1990 est la bijouterie et l'orfèvrerie. L'argent est utilisé pour fabriquer des objets et des bijoux (pendentifs, bracelets, colliers...) tout ceci est possible car l'argent possède une propriété qui permet de concevoir ces œuvres : sa bonne malléabilité. L'argent est souvent allié à de faibles quantités de cuivre pour renforcer ses caractéristiques mécaniques. L'argent le plus courant en bijouterie

## 12/16 PT TURKISH

Gümüş' ün kullanıldığı alanları sıralayacak olursak; fotoğraf sanayii, elektronik, para imali, süs eşyası ve takı yapımı ,alaşım lar, dişçilik 'tir. Ayrıca, yapay yağmur yağdırmakta, ayna sırlarının yapımında, bilgisayar röle kontaklarında, pil yapımında da kullanılmaktadır. Gümüş elektriği çok iyi geçirdiğinden ve kolayca tel haline geldiğinden, elektrik teli olarak kullanılmaktaydı. Fakat nadir bulunması ve kıymeti dolayısıyla, artık bu amaçla

## 12/16 PT SPANISH

En joyería y platería para fabricar gran variedad de artículos ornamentales y de uso doméstico cotidiano, y con menor grado de pureza, en artículos de bisutería. Para identificar la auténtica Plata de Ley o plata esterlina la que se usa para la fabricación de joyas, un sello con la inscripción "925" y algún otro símbolo que identifica al joyero viene haciéndose desde la Edad Media y todavía hoy en día se usa este método para identificarla. Las joyas y la platería de plata

## 12/16 PT CZECH

Stříbro a mince z něj ražené byly po tisíciletí rozšířeným platidlem. Pro měkkost stříbra se z něj velice dobře razily stříbrné peníze. Nejznámější a nejrozšířenější stříbrnou mincí byl tolar. Stříbrný tolar ražený byl tak rozšířeným a oblíbeným a stálým platidlem, až se stal i základem pro dnešní dolar. Tolar byl platidlem několik set let nejen v Evropě ale i na dalších kontinentech. Podobnost slov tolar a dolar je patrná. Další stříbrnou mincí byl groš. V našich

## 12/16 PT POLISH

W 2010 roku Meksyk z produkcją 128,6 mln uncji jest największym producentem srebra na świecie (15% światowej rocznej produkcji). Kolejne miejsca zajmują Peru i Chiny. Największym producentem srebra w Europie jest Polska. Dzięki dolnośląskim złożom miedzi i srebra eksploatowanym przez KGHM Polska Miedź wytwarzane jest rocznie ok. 1300 ton srebra rafinowanego. W 2010 KGHM Polska Miedź był trzecim producentem srebra na świecie, po



12/16 PT GERMAN

Das Silber stammte meistens aus den Minen in Laurion, die etwa 50 Kilometer südlich von Athen lagen. Bei den Ägyptern war Silber als Mondmetall bekannt. Auch in der Alchemie steht der Mond (lateinisch Luna) für Silber. Spätmittelalterliche und frühneuzeitliche Autoren, insbesondere auf dem Gebiet der Alchemie, nahmen eine Entstehung des Silbers durch Vermischung von Schwefel und Quecksilber (lateinisch Argentum

12/16 PT FRENCH

Le deuxième domaine avec environ 7 700 tonnes au début des années 1990 est la bijouterie et l'orfèvrerie. L'argent est utilisé pour fabriquer des objets et des bijoux (pendentifs, bracelets, colliers...) tout ceci est possible car l'argent possède une propriété qui permet de concevoir ces œuvres : sa bonne malléabilité. L'argent est souvent allié à de faibles quantités de cuivre pour renforcer ses caractéristiques. L'argent le plus

12/16 PT TURKISH

Gümüş' ün kullanıldığı alanları sıralayacak olursak; fotoğraf sanayii, elektronik, para imali, süs eşyası ve takı yapımı ,alaşımalar, dişçilik 'tir. Ayrıca, yapay yağmur yağdırmakta, ayna sırlarının yapımında, bilgisayar röle kontaklarında, pil yapımında da kullanılmaktadır. Gümüş elektriği çok iyi geçirdiğinden ve kolayca tel haline geldiğinden, elektrik teli olarak kullanılmaktaydı. Fakat nadir bulunması ve kıymeti

12/16 PT SPANISH

En joyería y platería para fabricar gran variedad de artículos ornamentales y de uso doméstico cotidiano, y con menor grado de pureza, en artículos de bisutería. Para identificar la auténtica Plata de Ley o plata esterlina la que se usa para la fabricación de joyas, un sello con la inscripción "925" y algún otro símbolo que identifica al joyero viene haciéndose desde la Edad Media y todavía hoy en día se usa este método para identificarla. Las

12/16 PT CZECH

Stříbro a mince z něj ražené byly po tisíciletí rozšířeným platidlem. Pro měkkost stříbra se z něj velice dobře razily stříbrné peníze. Nejznámější a nejrozšířenější stříbrnou mincí byl tolar. Stříbrný tolar ražený byl tak rozšířeným a oblíbeným a stálým platidlem, až se stal i základem pro dnešní dolar. Tolar byl platidlem několik set let nejen v Evropě ale i na dalších kontinentech. Podobnost slov tolar a dolar je patrná.

12/16 PT POLISH

W 2010 roku Meksyk z produkcją 128,6 mln uncji jest największym producentem srebra na świecie (15% światowej rocznej produkcji). Kolejne miejsca zajmują Peru i Chiny. Największym producentem srebra w Europie jest Polska. Dzięki dolnośląskim złożom miedzi i srebra eksploatowanym przez KGHM Polska Miedź wytwarzane jest rocznie ok. 1300 ton srebra rafinowanego. W 2010 KGHM Polska Miedź był trzecim producentem srebra

## 18/20 PT GERMAN

Silber wird von Menschen etwa seit dem 5. Jahrtausend v. Chr. verarbeitet. Es wurde zum Beispiel von den Assyrern, den Goten, den Griechen, den Römern, den Ägyptern und den Germanen benutzt. Zeitweise galt es als wertvoller als Gold. Das Silber stammte meistens aus den Minen in Laurion, die etwa 50 Kilometer südlich von Athen lagen. Bei den alten Ägyptern war Silber als Mondmetall bekannt. Auch in der Alchemie steht der Mond (lateinisch Luna)[18] für

## 18/20 PT FRENCH

Le deuxième domaine avec environ 7 700 tonnes au début des années 1990 est la bijouterie et l'orfèvrerie. L'argent est utilisé pour fabriquer des objets et des bijoux (pendentifs, bracelets, colliers...) tout ceci est possible car l'argent possède une propriété qui permet de concevoir ces œuvres : sa bonne malléabilité. L'argent est souvent allié à de faibles quantités de cuivre pour renforcer ses caractéristiques mécaniques. L'argent le plus courant en bijouterie est l'argent 925. Un

## 18/20 PT TURKISH

Gümüş' ün kullanıldığı alanları sıralayacak olursak; fotoğraf sanayii, elektronik, para imali, süs eşyası ve takı yapımı ,alaşım lar, dişçilik 'tir. Ayrıca, yapay yağmur yağdırmakta, ayna sırlarının yapımında, bilgisayar röle kontaklarında, pil yapımında da kullanılmaktadır. Gümüş elektriği çok iyi geçirdiğinden ve kolayca tel haline geldiğinden, elektrik teli olarak kullanılmaktaydı. Fakat nadir bulunması ve kıymeti dolayısıyla, artık bu amaçla kullanılmamaktadır. Bugün daha ziyade süs eşyası

## 18/20 PT SPANISH

En joyería y platería para fabricar gran variedad de artículos ornamentales y de uso doméstico cotidiano, y con menor grado de pureza, en artículos de bisutería. Para identificar la auténtica Plata de Ley o plata esterlina la que se usa para la fabricación de joyas, un sello con la inscripción "925" y algún otro símbolo que identifica al joyero viene haciéndose desde la Edad Media y todavía hoy en día se usa este método para identificarla. Las joyas y la platería

## 18/20 PT CZECH

Stříbro a mince z něj ražené byly po tisíciletí rozšířeným platidlem. Pro měkkost stříbra se z něj velice dobře razily stříbrné peníze. Nejznámější a nejrozšířenější stříbrnou mincí byl tolar. Stříbrný tolar ražený byl tak rozšířeným a oblíbeným a stálým platidlem, až se stal i základem pro dnešní dolar. Tolar byl platidlem několik set let nejen v Evropě ale i na dalších kontinentech. Podobnost slov tolar a dolar je patrná. Další stříbrnou mincí byl groš. V našich

## 18/20 PT POLISH

Czyste srebro wysokiej jakości zawiera przynajmniej 99,9% tego metalu, dostępne są także czystości powyżej 99,999%. W 2010 roku Meksyk z produkcją 128,6 mln uncji jest największym producentem srebra na świecie (15% światowej rocznej produkcji). Kolejne miejsca zajmują Peru i Chiny. Największym producentem srebra w Europie jest Polska. Dzięki dolnośląskim złożom miedzi i srebra eksploatowanym przez KGHM Polska Miedź

18/20 PT GERMAN

Silber wird von Menschen etwa seit dem 5. Jahrtausend v. Chr. verarbeitet. Es wurde zum Beispiel von den Assyrern, den Goten, den Griechen, den Römern, den Ägyptern und den Germanen benutzt. Zeitweise galt es als wertvoller als Gold. Das Silber stammte meistens aus den Minen in Laurion, die etwa 50 Kilometer südlich von Athen lagen. Bei den alten Ägyptern war Silber als Mondmetall bekannt. Auch in der Alchemie

18/20 PT FRENCH

Le deuxième domaine avec environ 7 700 tonnes au début des années 1990 est la bijouterie et l'orfèvrerie. L'argent est utilisé pour fabriquer des objets et des bijoux (pendentifs, bracelets, colliers...) tout ceci est possible car l'argent possède une propriété qui permet de concevoir ces œuvres : sa bonne malléabilité. L'argent est souvent allié à de faibles quantités de cuivre pour renforcer ses caractéristiques

18/20 PT TURKISH

Gümüş' ün kullanıldığı alanları sıralayacak olursak; fotoğraf sanayii, elektronik, para imali, süs eşyası ve takı yapımı, alaşımlar, dişçilik 'tir. Ayrıca, yapay yağmur yağdırmakta, ayna sırlarının yapımında, bilgisayar röle kontaklarında, pil yapımında da kullanılmaktadır. Gümüş elektriği çok iyi geçirdiğinden ve kolayca tel geldiğinden, elektrik teli olarak kullanılmaktaydı. Fakat nadir bulunması ve kıymeti dolayısıyla, artık

18/20 PT SPANISH

En joyería y platería para fabricar gran variedad de artículos ornamentales y de uso doméstico cotidiano, y con menor grado de pureza, en artículos de bisutería. Para identificar la auténtica Plata de Ley o plata esterlina la que se usa para la fabricación de joyas, un sello con la inscripción "925" y algún otro símbolo que identifica al joyero viene haciéndose desde la Edad Media y todavía hoy en día

18/20 PT CZECH

Stříbro a mince z něj ražené byly po tisíciletí rozšířeným platidlem. Pro měkkost stříbra se z něj velice dobře razily stříbrné peníze. Nejznámější a nejrozšířenější stříbrnou mincí byl tolar. Stříbrný tolar ražený byl tak rozšířeným a oblíbeným a stálým platidlem, až se stal i základem pro dnešní dolar. Tolar byl platidlem několik set let nejen v Evropě ale i na dalších kontinentech. Podobnost

18/20 PT POLISH

Czyste srebro wysokiej jakości zawiera przynajmniej 99,9% tego metalu, dostępne są także czystości powyżej 99,999%. W 2010 roku Meksyk z produkcją 128,6 mln uncji jest największym producentem srebra na świecie (15% światowej rocznej produkcji). Kolejne miejsca zajmują Peru i Chiny. Największym producentem srebra w Europie jest Polska. Dzięki dolnośląskim złożom miedzi i srebra eksploatowanym

18/20 PT GERMAN

**Silber wird von Menschen etwa seit dem 5. Jahrtausend v. Chr. verarbeitet. Es wurde zum Beispiel von den Assyrern, den Goten, den Griechen, den Römern, den Ägyptern und den Germanen benutzt. Zeitweise galt es als wertvoller als Gold. Das Silber stammte meistens aus den Minen in Laurion, die etwa 50 Kilometer südlich von Athen lagen. Bei den alten**

18/20 PT FRENCH

**Le deuxième domaine avec environ 7 700 tonnes au début des années 1990 est la bijouterie et l'orfèvrerie. L'argent est utilisé pour fabriquer des objets et des bijoux (pendentifs, bracelets, colliers...) tout ceci est possible car l'argent possède une propriété qui permet de concevoir ces œuvres : sa bonne malléabilité. L'argent est souvent allié à de faibles**

18/20 PT TURKISH

**Gümüş' ün kullanıldığı alanları sıralayacak olursak; fotoğraf sanayii, elektronik, para imali, süs eşyası ve takı yapımı ,alaşım lar, dişçilik 'tir. Ayrıca, yapay yağmur yağdırmakta, ayna sırlarının yapımında, bilgisayar röle kontaklarında, pil yapımında da kullanılmaktadır. Gümüş elektriği çok iyi geçirdiğinden ve kolayca tel haline geldiğinden, elektrik teli olarak**

18/20 PT SPANISH

**En joyería y platería para fabricar gran variedad de artículos ornamentales y de uso doméstico cotidiano, y con menor grado de pureza, en artículos de bisutería. Para identificar la auténtica Plata de Ley o plata esterlina la que se usa para la fabricación de joyas, un sello con la inscripción "925" y algún otro símbolo que identifica al joyero**

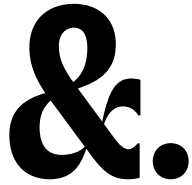
18/20 PT CZECH

**Stříbro a mince z něj ražené byly po tisíciletí rozšířeným platidlem. Pro měkkost stříbra se z něj velice dobře razily stříbrné peníze. Nejznámější a nejrozšířenější stříbrnou mincí byl tolar. Stříbrný tolar ražený byl tak rozšířeným a oblíbeným a stálým platidlem, až se stal i základem pro dnešní dolar. Tolar byl platidlem několik set let nejen v Evropě ale i**

18/20 PT POLISH

**Czyste srebro wysokiej jakości zawiera przynajmniej 99,9% tego metalu, dostępne są także czystości powyżej 99,999%. W 2010 roku Meksyk z produkcją 128,6 mln uncji jest największym producentem srebra na świecie (15% światowej rocznej produkcji). Kolejne miejsca zajmują Peru i Chiny. Największym producentem srebra w Europie jest**

# *Examples of use*



MY PROFILE	SHOP / MARKET	FAVORITES	READING LISTS
------------	---------------	-----------	---------------

**Trending New Articles**

Interior  
and color

*Beige is variously described as a pale sandy fawn color, a grayish tan, a light-grayish brown, or a pale to yellowish yellow. It takes its name from French, where the word originally meant natural wool that has been neither bleached nor dyed, hence also the color of natural wool and sheep.*

Trends  
and fads

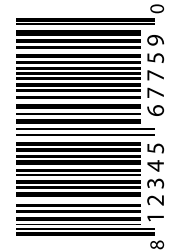
*For millennia, interior design trends have been used as aesthetic aids in our attempts to find some sort of inner peace: take the ancient Chinese art of*



Architecture  
Design  
Trends  
interiors



# Interior &.



8 12345 67759 0

INTERNATIONAL EDITION

WINTER 2023

# Hey, it's bread time

*fresh organic baking for picky eaters*

+1 917-464-3769  
167 W 74th St,  
New York, NY 10023

*Follow us on social  
media @breadtime*

*Opening times:  
daily 06:00 - 22:30*



**This dense, chewy artisan bread, made with organic flour, features cranberries, raisins, and nuts. It makes great sandwiches and wonderful toast but is also superb simply enjoyed plain, perhaps with a smear of butter.**



**INGREDIENTS:** Organic wheat flour, organic raisins, water, organic hazelnuts, organic sunflower seeds, organic molasses, organic vital wheat glute, yeast, sea salt, lactic acid, ascorbic acid, natural enzymes.

## Enjoy a fresh pie

*with organic apples,  
walnuts, and hazelnuts*



## Buy more cookies

*with cranberries  
and white chocolate*







Labels in this specimen are set in Bay Sans from Blast Foundry

[www.blast-foundry.com](http://www.blast-foundry.com) ↗ email: [info@blast-foundry.com](mailto:info@blast-foundry.com) ↖ Instagram: [@blast\\_foundry](https://www.instagram.com/blast_foundry)